



Topaz Labs, LLC

A Video and Image Enhancement Company

TOPAZ Adjust™ v3.0

User's Guide

March 2009

Copyright © 2009 Topaz Labs, LLC. All rights reserved.

<http://www.topazlabs.com>

TABLE OF CONTENTS

Introduction	3
Getting Started	4
The Adjust User Interface.....	5
Image Modes.....	6
Using Presets	7
Applying Presets.....	7
Snapshots.....	7
The Preset Previews	8
The Presets Menu	8
Settings and Parameters	10
EXPOSURE	10
DETAILS.....	11
Processing Modes	Error! Bookmark not defined.
COLOR	13
NOISE.....	14
Menu.....	16
Shortcut Keys.....	19
Using Topaz Adjust.....	20

http://www.topazlabs.com/topazlabs/03products/topaz_adjust/

for detailed tutorials, tips, and tricks

Introduction

Topaz Adjust is a Photoshop plug-in that uses a recent breakthrough in image processing technology to achieve unique creative exposure and color effects. Its primary functions are to enhance images in the following areas:

1. Dynamically equalize image exposure to result in everything from balanced and well exposed images to edgy and exciting image effects.
2. Unique color effects via advanced color processing.
3. Intelligent detail enhancement/reduction with innovative detail manipulation functions.
4. Noise reduction to suppression ISO noise and JPEG artifacts.
5. Complete control over all aspects of exposure, color, and detail enhancement. Ability to save and re-use settings presets for maximum utility and convenience.

Topaz Adjust uses sophisticated algorithms that allow the end user to quickly and effectively improve any image without spending a lot of time tweaking settings or making adjustment layers. It also includes several built-in presets that serve as a starting point for many images.

Although there are many parameters, they're all quite intuitive and easy to learn. The best way to become proficient at this filter is to experiment with it – the function of each parameter is made clear after trying it out a few times. In addition, there are useful tooltips for each parameter that can be accessed by hovering your mouse over it for a second.

In the following pages are explanations of the different functions and parameters in Topaz Adjust. Please visit the Topaz Adjust website at http://www.topazlabs.com/topazlabs/03products/topaz_adjust/ for more tutorials, tips, and tricks! As always, if you have any questions regarding any of our software, feel free to contact us at our support page: <http://www.topazlabs.com/support>.

Getting Started

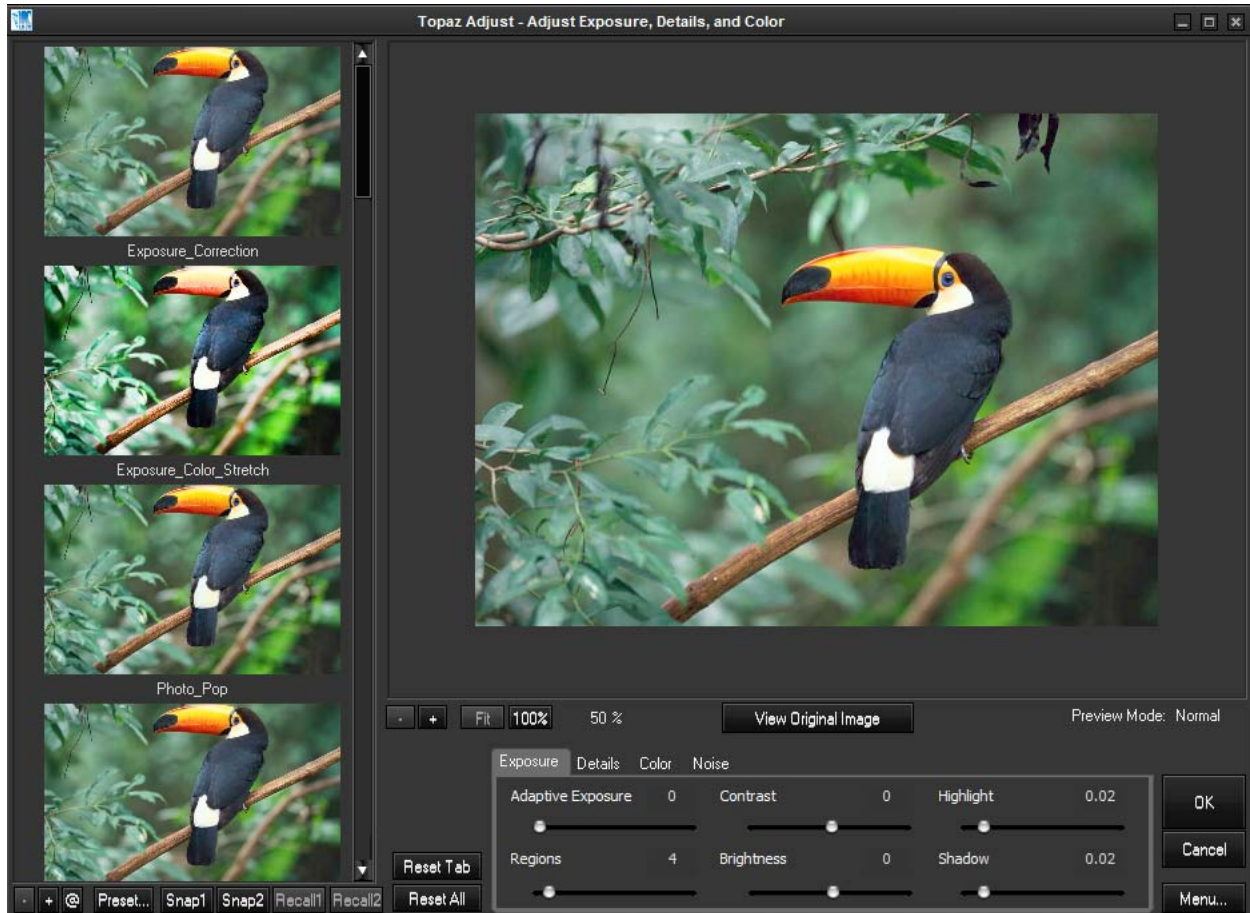
Topaz Adjust is a Photoshop plug-in, which means it won't run by itself and requires a compatible host program. To use Topaz Adjust, first open Photoshop or your other compatible host program (Paintshop Pro, Irfanview, Elements, etc) then load an image into it. You may now access Topaz Adjust by clicking on the Topaz Labs -> Topaz Adjust icon in the Filters menu of Photoshop.

Topaz Adjust is an in-depth exposure correction and creative effects filter that offers the user unprecedented control over their photos. Although it may look intimidating at first glance, don't worry: you'll be a pro after experimenting with it for a bit. This user's guide will tell you everything you need to know about the details.

First, we'll go over the Topaz Adjust user interface. Then, we'll go through what each parameter in each tab does. Finally, we'll go through three practical examples of Topaz Adjust in action.

The Adjust User Interface

The Topaz Adjust user interface is shown as follows:



All the GUI items, such as buttons and parameter settings have **context-sensitive help**, which is disabled by default. This means that if you enable it and place a mouse cursor on an item for one second, a help balloon will pop up and display useful information regarding that item. To enable context-sensitive help, go to Menu... Preferences and check the "**Enable popup help**" box.

The left side of the window contains the **Presets panel**, where you can preview, apply, and manipulate different presets.

The big image on the top-right is the **Preview** section that shows you the processed preview of the image. To **pan the preview image**, click and hold the left mouse button on the preview image and drag it around. When you let go of the mouse button, the new portion of image will be processed

according to the current settings and the result will be displayed. The checkbox “**Pan faster**” in Menu...>Preferences controls the speed of the pan action. Check it to pan around a large image.

To **compare the filtered and un-filtered images**, click and hold the “**View Original Image**” button to switch to the unfiltered image. Letting go of the button will switch back to the filtered image. You can toggle the filtered and un-filtered image back and forth like this in order to see the before and after. You can use SPACE key for the same purpose.

You can **zoom in** or **out** of the preview image clicking the “+”, or “-” buttons below the preview image, and you can resize the window as well. The **Fit** button will attempt to fit the entire image into the window. The **100%** button will zoom to 100% view. If zoomed below 100% the preview image will internally be resized in order to speed up preview updating.

You may find that a few **short-cut keys** to be quite handy. Pressing **SPACE** bar shows the original image in the preview while releasing it shows the processed image. “**Ctrl +**” and “**Ctrl -**” keys zoom in and out of the image, just like in Photoshop. You can use the **arrow keys** to adjust the value of slider that is currently selected. A complete list of the short-cut keys can be found later in this manual.

All the **filter’s parameters** are in the tabbed panel under the image preview. The following section will give a quick overview of the **Presets** section, and the section after that will explain the **Exposure, Details, Color, and Noise** tabs.

Image Modes

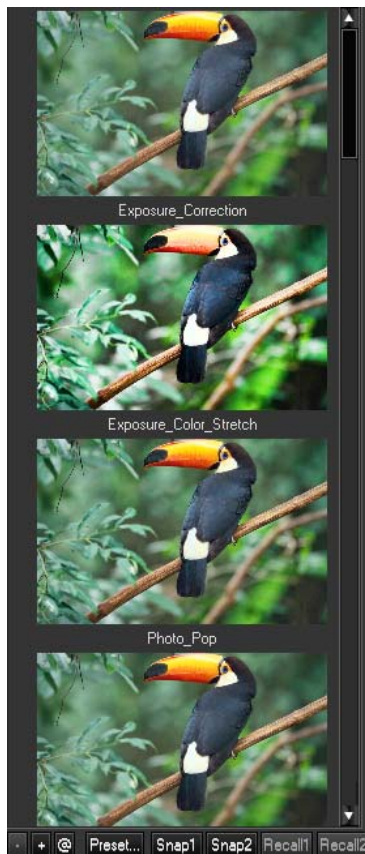
Photoshop and other host software support many image modes including as Grayscale, RGB, LAB, CMYK, etc. Images can also be 8, 16, or 32 bits per channel. **Topaz Adjust** supports both 8 bits per channel and 16 bits per channel.

Topaz Adjusts supports RGB mode only. To work on black-and-white images, first convert them to RGB mode.

If the filter is grayed out in the Filters menu, it’s likely that you either don’t have an image open or you’re using an unsupported image mode.

Using Presets

Presets are a great way to speed up and simplify the whole process of using Topaz Adjust. They function as “snapshots” of certain sets of Topaz Adjust parameter settings that you can recall and reapply at any time in the future. We’ve included some presets for you and, although they won’t work for every single photograph, they serve as excellent starting points for customized tweaking.



Please note that presets are only meant to be a starting point and different images may not work with certain presets. Each photograph is unique and presets may not bring out the best in them. The best way to get great-looking images is to experiment with the filter until you’re satisfied. Despite the number of sliders and settings, getting a great result is easier than you might think!

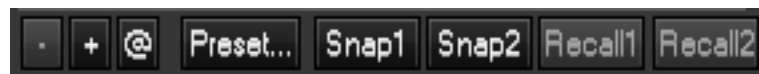
Applying Presets

Applying a previously defined preset is easy and intuitive. Simply clicking a preset will change all the settings in Topaz Adjust to match the preset. At this point you may still want to go through the tabs and tweak the parameters.

If you’d prefer to see the presets in List mode instead of having a preview for every single one, click the Preview menu and hit “Toggle list/Thumbnail”.

Snapshots

New in Topaz Adjust v3 is the **Snapshots** feature:

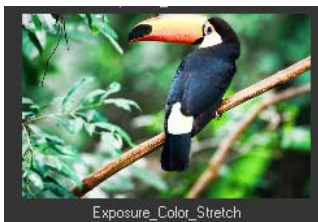


The Snapshots feature gives you a quick way to create up to two snapshots of your settings to compare without having to save presets. For example, if you wanted to compare how two different

settings would work on one image, you would just save both settings as different snapshots and compare the two easily without having to save, apply, and then delete presets.


To use snapshots, simply click **Snap 1** or **Snap 2** to save your current settings into memory. Clicking **Recall 1** or **Recall 2** applies the saved settings to the image in much the same way as a preset does. Please note that the snapshots are deleted if you exit out of the current Topaz Adjust window because they are meant to help you in the current Topaz Adjust session only.

Preset Previews



Topaz Adjust v3 includes a small thumbnail above each preset to preview the settings before you apply them to the image. This way you can scroll down the list quickly and see the different previews' results on the image without too many clicks.

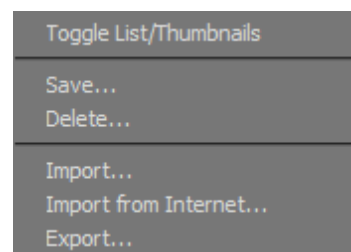
If you have many presets and you want to see them as a list without the thumbnails instead, simply select "Toggle List/Thumbnails" from the **Preset...** menu and the thumbnails will be replaced by a list of your available presets.

The three buttons on the bottom left of Topaz Adjust controls the zoom and  position of the preview. Click the **+** button to zoom every single preset preview *in* so you can see more preview detail. Click the **-** button to zoom every preset previous *out* so you can see the bigger picture with the preview.

Click the **@** button to position the preview presets to where your main Topaz Adjust preview is located. If you scroll the main Topaz Adjust preview to a certain location and then press the **@** button again, every preset preview will then jump to that location as well.

The Presets Menu

Because of the multitude of functions and parameters inside of Topaz Adjust, it's very convenient to be able to define presets and save your best settings for later use. First, adjust the Topaz Adjust parameters until you're satisfied with the result and want to save the settings. Then,



click on the *Presets* button and click the “**Save...**” button.

Enter a preset name and optional description and click OK. Please note that if the name you've entered is the same as a preset you've already defined, instead of creating a new preset Topaz Adjust will just override the first one. Note that you can't override or delete the default presets that we've provided.

The preset you saved will be located in the “Presets” folder of Topaz Adjust, usually at *C:\Program Files\Topaz Labs\Topaz Adjust\Presets* unless you've opted to install Topaz Adjust into a different directory. You'll notice that in the *Presets* folder there is already a few preset files. Your preset will be saved as a new file whose filename is the same as your preset name and file extension at .ppt. If you like, feel free to share your saved presets by emailing them to your friends and having them put it into their Topaz Adjust Presets folder.

Your new preset is also automatically saved into the Topaz Adjust presets menu and the preview is automatically generated. To apply it later, just click it like any other preset. You may then go through the sliders and tweak them until you're satisfied with the settings for that particular image.

If you'd like to delete a preset, use the **Delete** option with your desired preset selected.

To import a preset file, click the **Import** button. This will open up a Browse box to import a saved preset from your computer into Topaz Adjust. This is useful if you have downloaded a preset file that you'd like to use.

To import a preset file directly from the Internet, click the **Import from Internet...** button and paste in the exact URL in which the preset file is located.

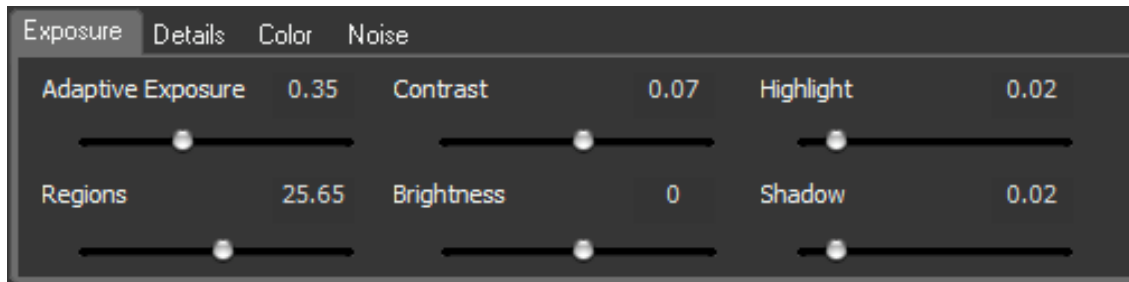
To export the preset file to a certain location, click “**Export**”. You can then share this file with other users who may then Import it.

Settings and Parameters

Topaz Adjust makes use of 4 adjustment tabs: **Exposure**, **Details**, **Color**, and **Noise**. The best teacher for this filter is experimentation – each parameter, when adjusted, has a quite noticeable effect that you'll pick up quickly. What follows are some guidelines to follow and some tips to keep in mind for each of the parameters.

In general, you will adjust the parameters using the tabs from left to right, starting from the Exposure tab.

EXPOSURE



The **Exposure** tab uses adaptive technique to balance the exposure of the image. It can fix exposure problems and apply a variety of creative effects. Different combinations of the settings may create many different possibilities.

Adaptive Exposure

Evens out the exposure of sections of the image, and attempts to balance the exposure. This setting works in conjunction with the *Regions* setting. A setting of 0 disables adaptive exposure balancing while a setting of 1 applies full adaptive exposure balancing.

Regions

The number of regions to divide the image into for Adaptive Exposure processing. The larger this number is, the more local contrast and detail enhancement you'll get.

Contrast

Controls whether the exposure equalizations tend more to a “U” (valley) shape or an “n” (hill) shape on the histogram. Not the same as your standard contrast adjustment.

Brightness

Standard brightness adjustment parameter. Increasing this parameter increases the overall brightness of the image.

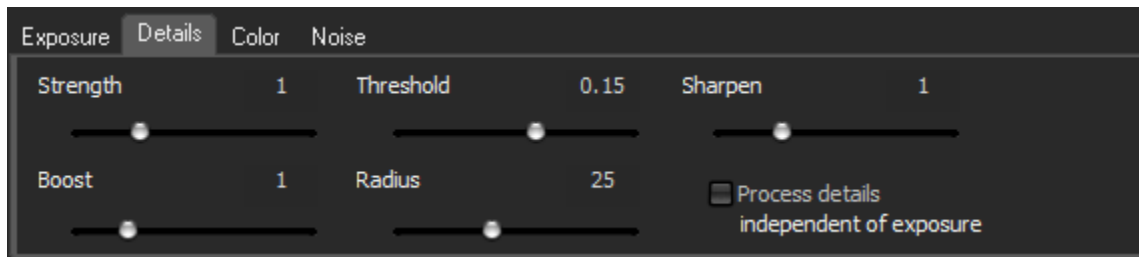
Highlight

Topaz Adjust includes built-in protection from blowing out the highlights. Increasing this parameter increases the range of highlights protected. A setting of 0 disables highlight protection.

Shadow

Built-in protection from crushing the blacks. Increasing this parameter increases the range of blacks protected. A setting of 0 disables shadows protection.

DETAILS



The **Details** tab allows you to enhance or reduce smaller details of an image separate from the rest of the image. This tab gives the user creative control over enhancing or suppressing details in many ways, which can reveal previously obscured image information.

Strength

The degree of detail enhancement as determined by the “Details Threshold” value. A value greater than 1.0 strengthens the details in the image while a value less than 1.0 reduces and smoothes details.

Boost

The degree of detail enhancement to the smaller details in the image. A value higher than 1.0 strengthens the weaker details in the image while a value less than 1.0 reduces smaller details.

This parameter affect mostly weak details. Strong details should be adjusted using **Strength**.

Threshold

A larger threshold allows more image elements to be considered as “detail”;

Radius

The larger the **Details Radius** is, the larger enhanced details will be. The smaller this parameter is, the smaller the enhanced details.

Sharpen

The amount to sharpen the image. This is a quick sharpener put in for convenience to deal with image with small to moderate blur. Try Topaz Sharpen in Topaz Vivacity instead of this if quality of sharpening is your greatest priority.

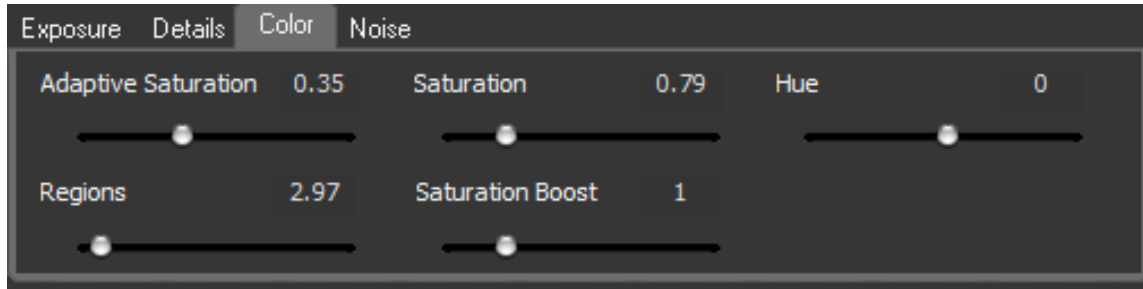
Process details independent of exposure

This check box is new in V3.0. It allows you to adjust exposure and details separately.

When this box is unchecked, Topaz Adjust uses the same method as the Topaz Adjust V2.x: the adaptive exposure and details are processed together. Therefore, if you increase local contrast, the details strength will also be significantly increased. This method produces good results for most images but may amplify noise in smooth areas like skies.

When this box is checked, however, only underlying exposure will be adjusted when you use the Exposure tab. The details will only be adjusted through the Details tab. This gives you extra flexibility in your image and tends to reduce the overall level of noise and “dirty area” in the final image.

COLOR



The **Color** tab applies adaptive color processing. It's pretty much works the same as Exposure except instead of affecting the image's exposure it works on its color instead. Interesting color effects can be created here.

Adaptive Saturation:

Evens out the saturation of sections of the image, and attempts to balance it. This setting works in conjunction with the *Regions* setting. A setting of 0 disables adaptive saturation balancing while a setting of 1 applies full adaptive saturation balancing.

Regions

The number of regions to divide the image into for Adaptive Exposure processing. The larger this number is, the more local contrast in saturation you'll get.

Saturation

Standard parameter to increase or decrease overall saturation of the image.

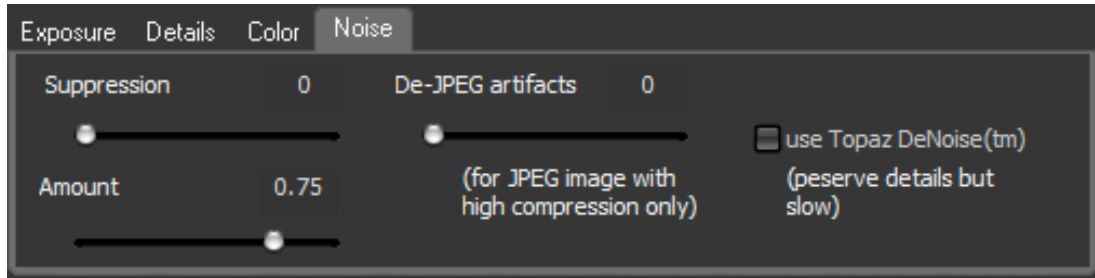
Saturation Boost

Increase or decrease the saturation of the less saturated colors.

Hue

A convenient hue correction control.

NOISE



The Topaz Adjust **noise** algorithms are intelligent and can detect the amount and type of noise in an image in most cases. It's designed with speed and usability in mind, and is extremely fast and snappy. However, you now have the option to use a slower but higher quality noise reduction algorithm by checking the checkbox "**use Topaz DeNoise**". (This is equivalent to the "Fast" mode in Topaz DeNoise without the extra options. Higher quality noise reduction can be found in the separate Topaz DeNoise filter.)

Suppression

The suppression is the modifier between the automatic noise map and the amount of noise removed. A value of 1 removes what Topaz Adjust calculated to be the correct amount of noise in an image. A higher value removes more noise (relative to the noise map) and a lower value removes less. The filter is generally good at guessing, so start off with a setting of 1 and work from there.

Amount

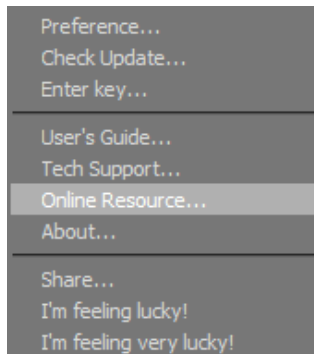
The degree of noise suppression. A higher setting applies higher suppression to image noise. 0 turns noise reduction off and 1 turns it fully on. Comparable to an "opacity" setting in Photoshop for the noise map.

JPEG Artifacts Removals

Removes telltale JPEG artifacts such as checkerboarding and mosquito noise. This should be used while working with highly compressed image, because other Topaz Adjust functions tend to

amplify compression artifacts. However, the processing speed of this feature is slow compared with the rest of the functions in the filter, so you might want to apply this last.

Menu



Access Topaz Adjust's menu by clicking on the **Menu...** button in the bottom right corner of the filter.

The **I'm feeling very lucky!** button takes every single parameter in the exposure, detail, and color tabs and immediately randomizes them.

Usually this tends to give some pretty extreme results but can be fun or even inspiring to play with. The **I'm feeling lucky!** button only randomizes the current tab.

Click the **Share...** button to automatically generate forum- or email-friendly text of your current settings. This is useful when you want to share your current settings but don't want to deal with saving and exporting presets.

About... shows you your current version of Topaz Adjust and lists the homepage <http://www.topazlabs.com>.

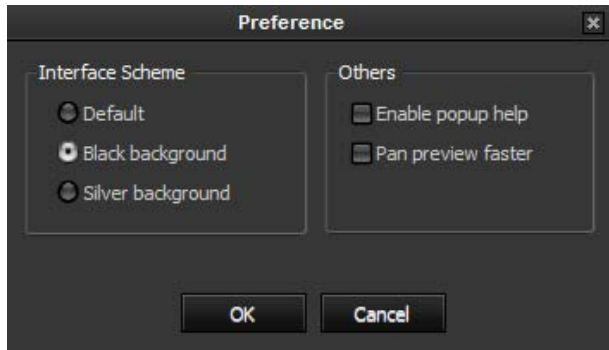
Online Resource... brings you to the Topaz Adjust homepage where we have video tutorials and suggestions available for your immediate viewing.

User's Guide... brings up the document you're currently reading.

Enter Key... to enter a license key or 30-day extension for this product. If you've already entered a full-version license key, feel free to ignore this button.

Check Update... checks the current version of Topaz Adjust installed on your computer to the version on the server. If there's a new version available, Topaz Adjust will tell you after you click this button.

Preference... brings up a menu where you can adjust the visual color scheme and a couple of other options:



Every setting in the **Preference** window is saved for future use of Topaz Adjust. In order to change one of these preferences, simply access this menu again.

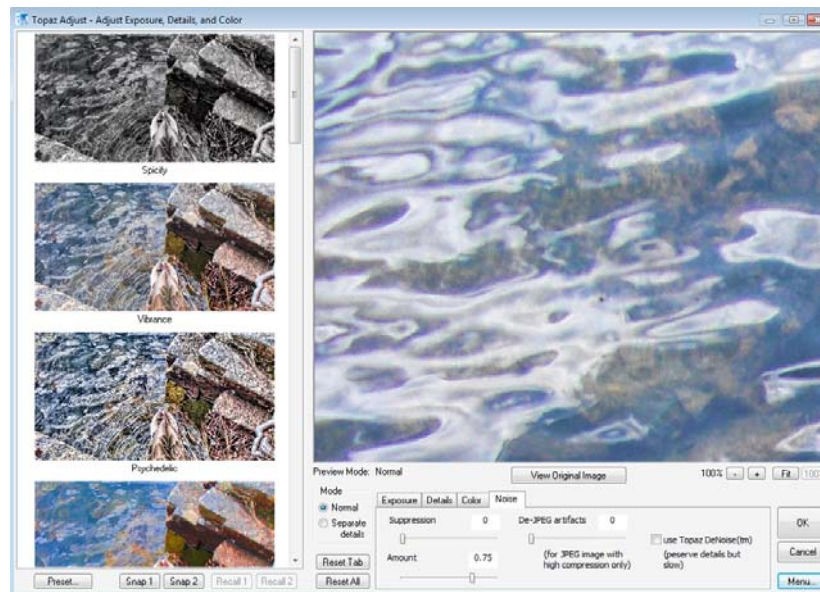
Enable popup help gives tooltip reminders and tips when hovering your mouse over certain areas of the

filter. Turn this off if you're finding that they impede your work.

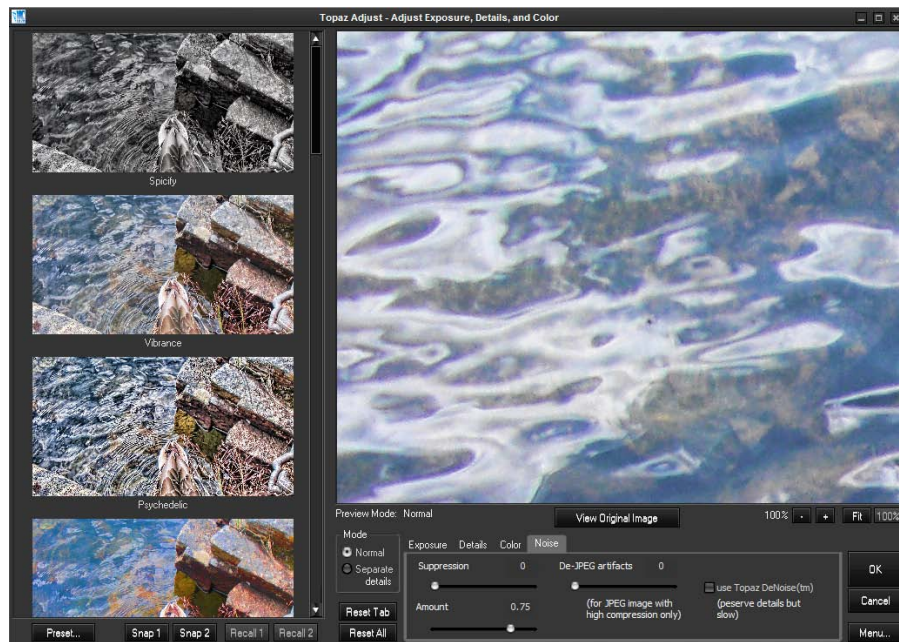
Pan preview faster affects the panning speed of the Topaz Adjust preview.

In **Interface Scheme**, choose the color scheme that you'd like for Topaz Adjust to display. This setting will be remembered for future use. Here are the three color schemes currently available:

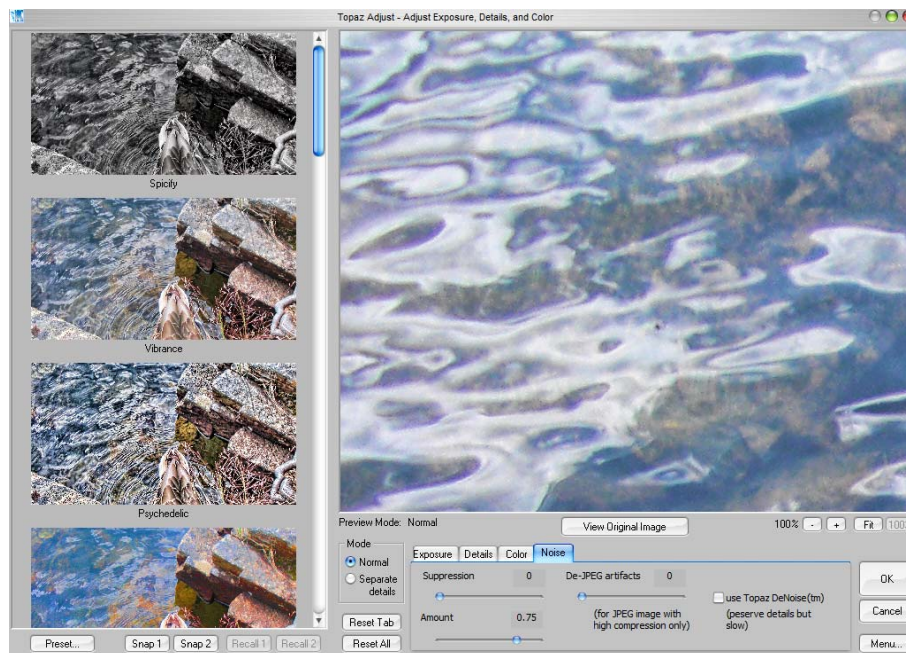
Default:



Black background:



Silver background:



For more information about Topaz Adjust visit: http://www.topazlabs.com/topazlabs/03products/topaz_adjust/

Shortcut Keys

Topaz Adjust uses some shortcut keys to speed up your workflow. The following key works at all time:

SPACEBAR	View original image.
CTRL-1	Recall Snapshot 1
CTRL-2	Recall Snapshot 2
ALT-1	Capture Snapshot 1
ALT-2	Capture Snapshot 2
CTRL-R	Reset Current Tab
CTRL-ALT-R	Reset All
CTRL-0	Zoom to Fit
CTRL-ALT-0	Zoom to 100%
+ or CTRL-+	Zoom In
- or CTRL--	Zoom Ou

In addition, if a parameter slider is in focus (usually by clicking on it), you can use the following key to change its value:

Left arrow or up arrow	Reduce value by 0.01
Right arrow or down arrow	Increase value by 0.01
Page up key	Reduce value by 0.1
Page down key	Increase value by 0.1
Home key	Set the value to minimum
End key	Set the value to maximum

Finally, you can use **up arrow** or **down arrow** key to select preset when the preset preview pan is in focus.

Using Topaz Adjust

In this section, we'll give you some ideas about how to use Topaz Adjust to best effect. For example, even the best photographers can't get a perfect exposure every single time. However, Topaz Adjust can help you quickly get over any mistakes you make in a few seconds of processing. For instance, take a look at the following examples:





For more information about Topaz Adjust visit: http://www.topazlabs.com/topazlabs/03products/topaz_adjust/

These were all done using a one-click preset (*Exposure Correction*) and took about 1 second of processing time. If we had many under- or over-exposed images, we could record a simple action using this preset that would solve the entire problem in a heartbeat.

Topaz Adjust is not only used for fixing photos, however. Sometimes even well-exposed photos could use a bit more pop – something to really get a “wow” reaction. To this end, Topaz Adjust easily creates countless styles of unique photographic effects in your images. Take a look at the following before and after examples that were again done using included presets:







These examples are only scratching the surface. After a few minutes of experimentation, you'll find that your results can be even better than the ones found in our User's Manual. If you'd like tutorials for these and many other examples, they're located at the Topaz Adjust product website. We update this site frequently with more tutorials, examples, and techniques. It's located at:

http://www.topazlabs.com/topazlabs/03products/topaz_adjust/

Check there periodically for new Topaz Adjust information, or follow us on Twitter at <http://twitter.com/topazlabs> for instant updates and new tutorials. If you ever have any questions, suggestions, or comments, feel free to contact us at <http://www.topazlabs.com/support/>.
